

# MSP Practitioner

MSP® Practitioner Managing Successful Programmes Practitioner is part of the Best Management Practice Portfolio. It is the follow-up on Managing Successful Programmes® Foundation and a prerequisite for the Managing Successful Programmes® Advanced Practitioner. The purpose of the MSP® Practitioner certification is to confirm whether you understand the MSP guidance well enough to apply it to your own work and are able to act as an informed member of a programme management team.

## Who should attend?

This Course is designed for Program office team members, Business change team members, Project delivery team members, Anyone who needs to understand the terminology and concepts underpinning MSP, Those wishing to pursue higher level MSP® qualifications.

# Benefits

**Enable more effective delivery of change & Keep the focus on the business change objectives**

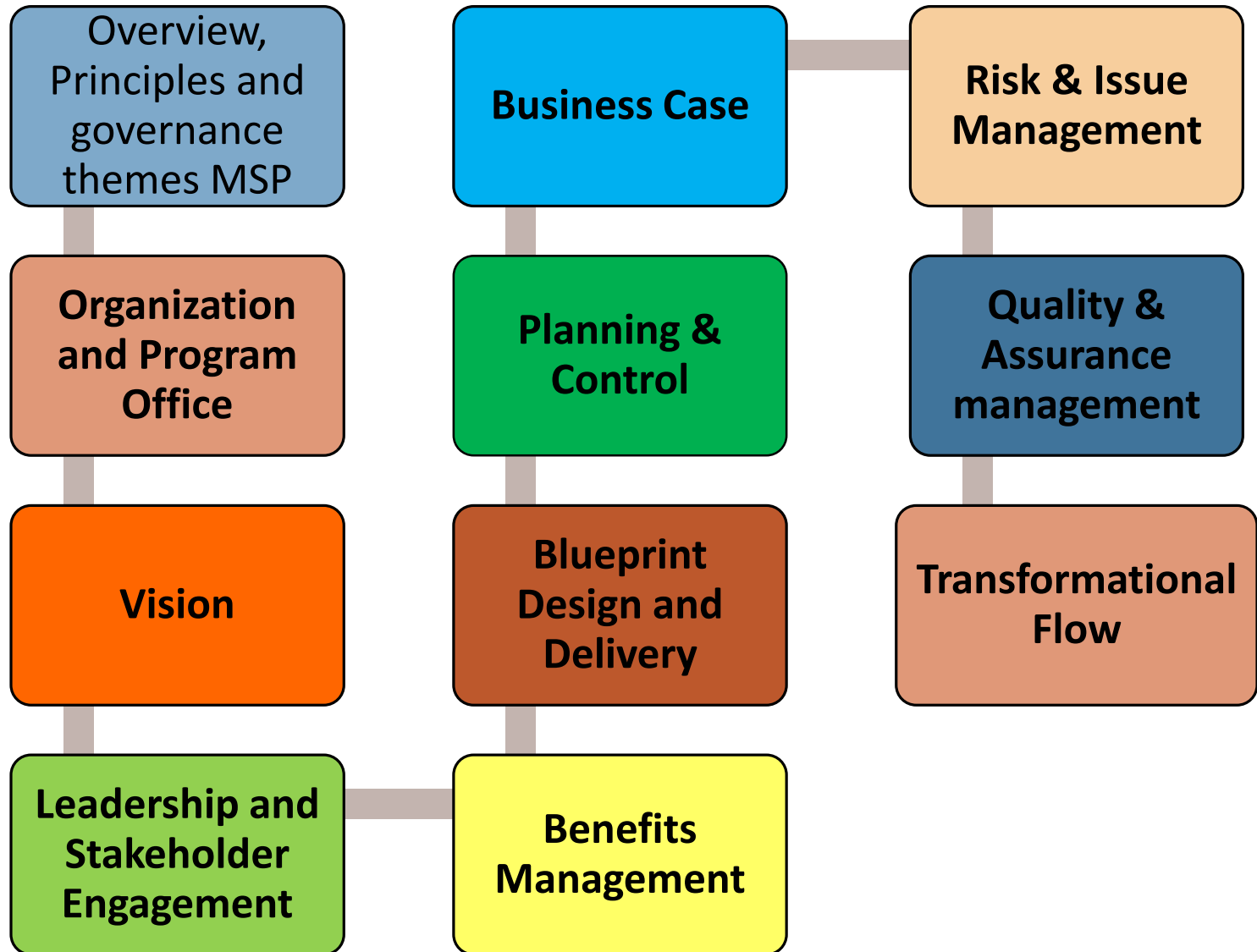
**Provide a framework for senior management to direct the change process & Encourage more efficient use of resources through project prioritisation and integration**

**Provide better management of risk because the wider context is understood & Achieve business benefits during and after the programme through a formal process**

**Improve control of costs, standards and quality . Enable more effective management of the Business Case & Provide more efficient control of a complex range of activities**

4P Advisory Services

# Course Outline



## Prerequisites for the EXAM

- MSP Foundation Certified.

## Exam Details

- Internal examination and additional evaluation (by the trainer) may be done during the training.
- 8 scenario -based objective test questions.
- 40 points out of 80 required to pass (50%)
- 150 min hour duration
- Open book (only the official MSP manual is allowed)

The Trainer/facilitator may also choose to evaluate the participants during the program at the class room.





4P Advisory Services

>>>Contact: [Sonali@4pa.in](mailto:Sonali@4pa.in)

**Join NOW!**

>>Contact: 9321591380

4P Advisory Services